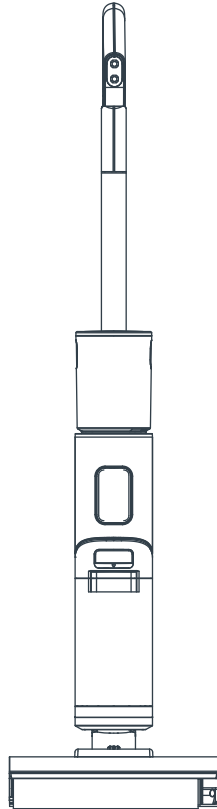


eureka



INSTRUCTION MANUAL

NEW430BL

FLOOR CLEANER

Please read the manual before use.

CONTENTS

SAFETY INSTRUCTIONS	03
PRODUCT OVERVIEW	06
PRODUCT INSTALLATION	08
OPERATION INSTRUCTIONS	10
CLEANING AND MAINTENANCE	12
PROBLEM SOLVING	15
SPECIFICATIONS	17

SAFETY INSTRUCTIONS

- This product is suitable for hard floors in the indoor environment, including waxed floors, stone floors, rubber floors, marble floors, granite floors, terrazzo floors, solid wood floors, composite floors, bamboo floors, as well as glazed tiles, ceramic facing tiles and other flat ground. It may not achieve the best results if the product is used on uneven ground surface.
- Do not use this product near or on the surface of flammable and explosive objects, which may cause fire and explosion.
- Do not use this product near a working fireplace or heater to prevent deformation of the machine casing.
- Do not use it to clean high-temperature substances (unextinguished cigarette butts, matches or hot ash, etc.), ultra-fine substances (such as lime, cement, wood chips, gypsum powder, ashes, charcoal, etc.), dangerous substances (such as solvents, descaling agents, etc.), chemical substances (such as acidic substances, detergents, etc.) and other substances with uncertain physical properties.
- Do not use this floor cleaner to absorb detergent, kerosene, gasoline, alcohol, paint or perfume, or else it may cause short-circuit, fire or explosion.
- Do not use this floor cleaner to absorb toner used in laser printers and copiers, or else it may cause fire or explosion.
- Do not use this floor cleaner to absorb sharp or large objects, such as glass shards, small toys, pins, paper clips, stones, plaster and large pieces of paper, or else it may block up and damage the machine.
- Do not use this floor cleaner to absorb any burning or smoking objects, such as soot from the unextinguished heat source, burning cigarette butts or matches.
- This product can't be used to clean stains of strong grease, strong viscosity, or strong dyeing properties such as shoe polish, paint, and pigments.
Do not touch the plug or any live part of the product with wet hands to avoid the risk of electric shock.
- Stop using it if the plug is damaged. Please call our service personnel for replacement in order to avoid hazards.
- Please keep the airflow channels and moving parts of this product away from long hair, loose clothing, fingers and other parts of the body. Do not point the suction tube, accessory tip or tool to the eyes or ears, or put them in the mouth.
- Please use the cleaning agent produced by our company and the manufacturer approved by us.
- Do not add other solutions to avoid generating toxic and harmful gases.
- If electric leakage, motor over-temperature, abnormal noise, peculiar smell or weak suction is found during use, stop using it immediately and call our service personnel.

SAFETY INSTRUCTIONS

- After using the machine, please clean the wastewater tank in time to avoid peculiar smell, and keep the ventilation path unobstructed, so as to avoid obstruction, or else it will cause the suction power to drop, the motor to heat up, and will affect the service life of the floor cleaner.
- After using the machine, please store it in a dry place. A humid place will affect the insulation and service life of the appliance.
- Do not soak or rinse the floor cleaner or floor brush in water.
- This appliance can be used by children aged from 8 years and above and persons with reduced physical, sensory or mental capabilities or lack of experience and knowledge if they have been given supervision or instruction concerning use of the appliance in a safe way and understand the hazards involved.
- Cleaning and user maintenance shall not be made by children without supervision.
- Children should not play with the appliance.
- Please check the suction nozzle regularly. If there is a blockage, please clear it in time to avoid decrease in suction and affecting the performance of the machine.
- Turn off the power before replacing the brush.
- In the following situations, do not use the machine, contact to our customer service for help in time:
 1. Obvious damage or abnormal operation caused by drop;
 2. Power cord is damaged.
- Do not disassemble the enclosed machine without permission. There are no user serviceable parts. Do not try to change the performance of the machine, or else it will cause danger.
- Using a voltage that does not match the specifications will cause damage to the product and more likely to cause harm to the user. The correct rated voltage is marked on the nameplate.
- When cleaning the stairs, be extra cautious to prevent falling.
- Do not shake or impact the machine up and down to prevent wastewater from flowing into the motor.
- When the motor is working, do not lift or carry the appliance up and down, and do not put the machine on its side to prevent the wastewater from entering the motor. To prevent tip-over, place the machine against the wall after use.
- Do not use the floor cleaner before the clean water tank and wastewater tank are installed properly.
- Do not place any small objects in the outlet or block the outlet. Remove any small objects that may interfere with the flow of air through the outlet to prevent overheating of the machine.

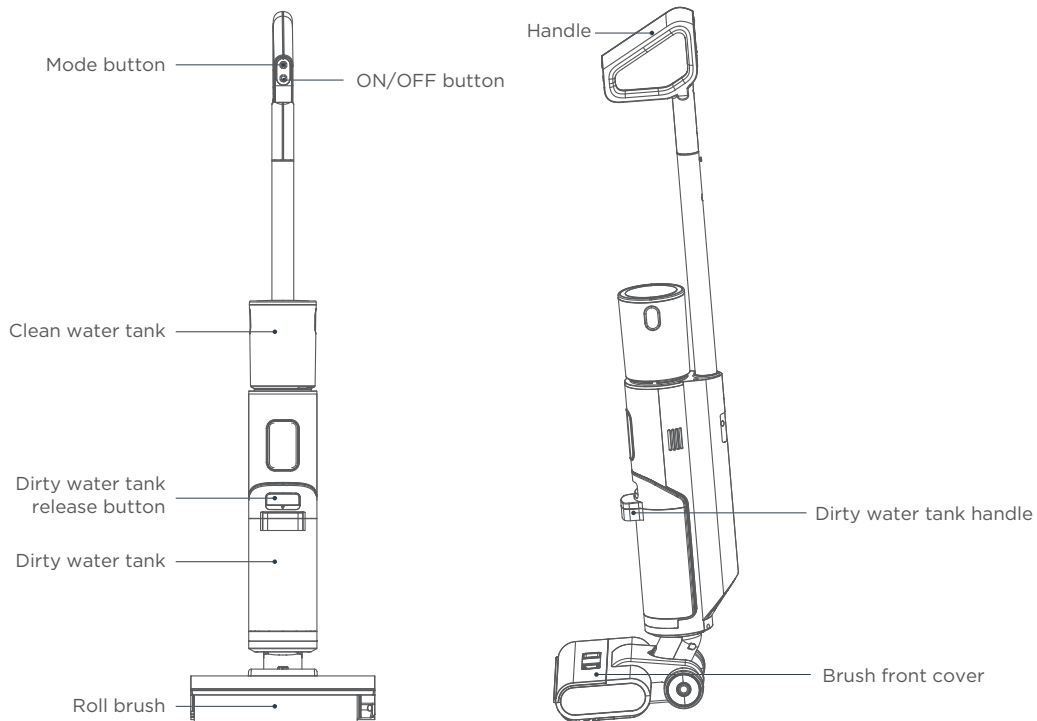
SAFETY INSTRUCTIONS

- Do not wet the machine body, or it may cause damage and fire due to short circuit.
 - This is only allow to use the docking station for charge the battery.
 - The plug must be removed from the socket-outlet before cleaning or maintaining the appliance.
- All the technologies and other data in this manual are obtained by our company or the designated third party testing company, and we reserve the right of final interpretation.

Use and Precautions of Washer Detergent

- Mix and clean according to instructions. It is recommended to use cleaning liquid produced by our company or manufacturers approved by our company, which do not contain acid, alkali solutions or substances harmful to the environment.
- If a large amount of cleaning liquid is added, more foam will be generated when used, which may infiltrate into the motor and cause danger.
- The cleaning liquid should be kept out of reach of children. If the cleaning liquid accidentally gets into eyes, rinse thoroughly with clean water; in case of accidental ingestion, seek medical treatment immediately. Follow local environmental protection regulations when handling wastewater and cleaning liquid.

PRODUCT OVERVIEW

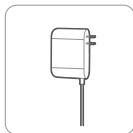


PRODUCT OVERVIEW

List of Accessories



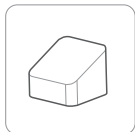
Charging/docking station x 1



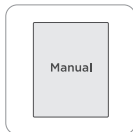
Adapter x 1



Cleaning brush x 1



Filter x 1



User's manual x 1



Cleaning solution x 1

Parts

Turbo mode

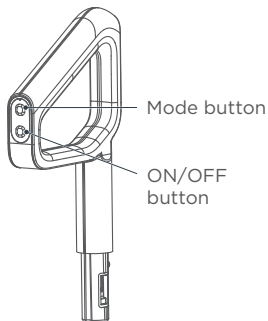
The water from the machine wets the roll brush, and the machine provides strong suction power to clean the floor.

Eco mode

The water from the machine wets the roll brush to clean the floor.

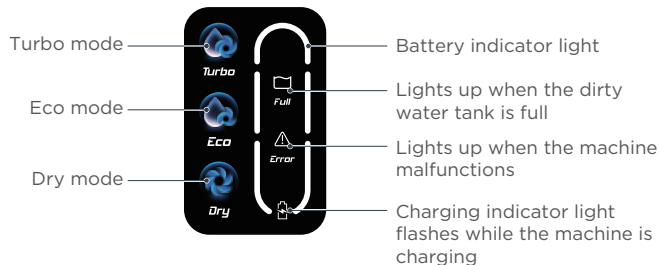
Dry mode

The machine only provides strong suction power to clean the floor, which sucks up dry waste and residual water from the floor.



Self cleaning function: the battery indicator light displays a constant blue light.

Drying function: the battery indicator light is blinking blue for 30 seconds before turning off.



Self cleaning/
Drying Function



Full battery



Normal



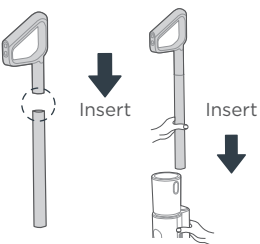
Low battery

PRODUCT INSTALLATION

Handle Installation and Removal

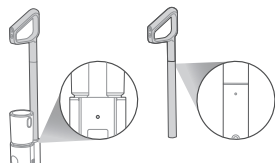
Installation

Insert the end of the handle into the port of the main unit along the vertical direction until there is a click, which indicates the installation is successful;



Removal

Insert a screwdriver or other tools into the hole, and pull out the handle upward.



1. Insert the charging end of the charger into the rear port of the charging dock, and connect the plug to a 100V-240V power.
2. Put the machine upright into the charging/docking station, and make sure that the bottom of the body completely falls into the charging base. At this moment, a voice will prompt "start charging", and the indicator light flashes.
3. It takes about 3-4 hours to fully charge the machine. When the battery is fully charged, the indicator will turn off and the machine will automatically power off.

Charging Battery



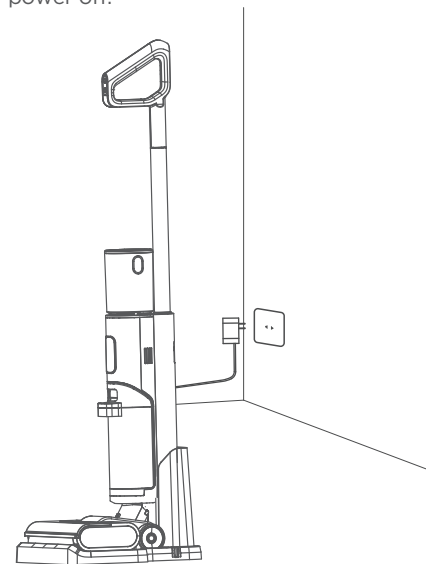
WARNING

For the purposes of recharging the battery, only use the detachable supply unit provided with this appliance.



ATTENTION

Charge the product before the first use.



PRODUCT INSTALLATION



ATTENTION

Voice cannot be triggered when turned off.

4. When the machine is powered on for the first time, the voice function is turned on by default, which can be turned off by pressing the voice button, and be turned on by pressing this button again.



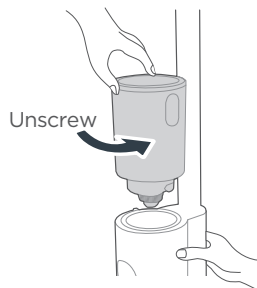
Filling Clean Water Tank



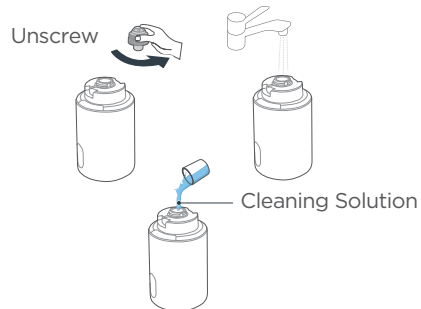
ATTENTION

Fill water only to the clean water tank.

- 01** | Hold the machine with one hand, grab the water tank with the other hand, rotate and remove the water tank.

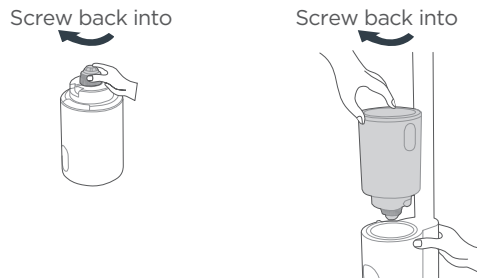


- 02** | Unscrew the water tank cover, pour tap water into the water tank, and add an appropriate amount of cleaning solution if desired.



Note: Eureka cleaning solution only.

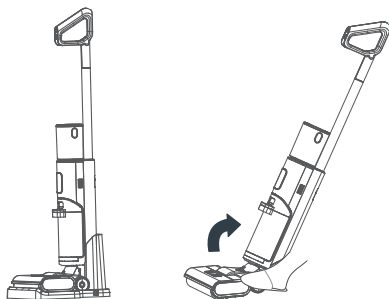
- 03** | Screw the water tank back into place on the machine, and when you hear a click sound, it means the installation is successful.



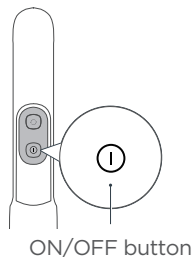
OPERATION INSTRUCTIONS

Turning On and Cleaning

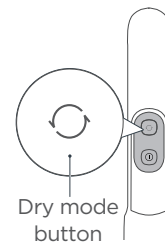
- 01** Step on the floor brush and pull the handle diagonally until you hear a click. The machine is now in standby mode.



- 02** To start working, press the ON/OFF button. Press this button again to stop the machine.



- 03** The machine defaults to ECO mode when it starts. To switch to the Eco mode, press the mode switch button. Press this button again to switch to the Dry mode.



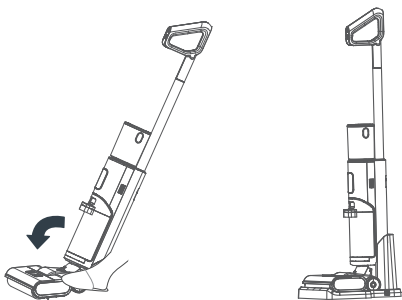
ATTENTION

After using the machine, it is recommended to place it vertically on the specially designed charging/storage base.

OPERATION INSTRUCTIONS

Upright Pause Function

In working state, you can step on the floor brush to erect the body, the machine will stop working and enter standby state; it will automatically turn off after 2 minutes of standby.



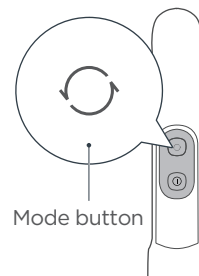
Self-cleaning + Drying Function



CAUTION

- After the self-drying is complete, it automatically enters the charging state. It is normal for the machine to indicate low battery after self-drying in a low battery state.
- In the self-drying mode, to improve the drying effect, the rolling brush will rotate every 2 minutes with a "drip" sound, which is a normal phenomenon.

1. When the machine is in charging state, short press the self-cleaning button to activate the self-cleaning and self-drying mode. During the self-drying process, the roll brush rotates for 30 seconds for centrifugal drying, followed by the low-speed operation of the fan for 3-5h to properly dry the roll brush and pipeline.
2. When the machine is in charging state, long press the mode switch button for 3 seconds to directly enter the self-drying mode.
3. To stop the self-cleaning or self-drying, press the self-cleaning button again.
4. After the self-cleaning is completed, please clean the dirty water tank in time. If there are residual stains on the base, please clean them in time.



CLEANING AND MAINTENANCE

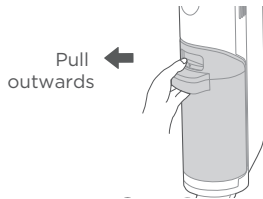
Waste Water Detect Alarm



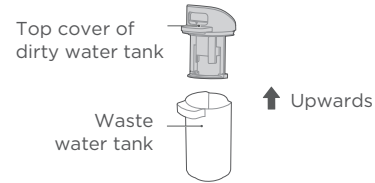
ATTENTION

- After cleaning, it is recommended to place the machine upright in the charging base; do not place the machine in places with direct sunlight or moisture.
- In order not to affect the performance of the machine, it is recommended that you regularly maintain its parts.
- Before cleaning, please disconnect the power supply to stop the machine.
- Scrub with water or neutral detergent, wring out the cleaning cloth before scrubbing to avoid water leaking into the electrical components.

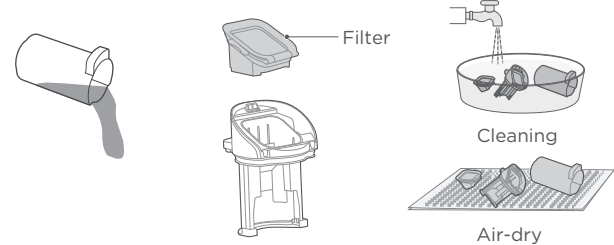
- 01** | Press the button of dirty water tank with your thumb and pull outward to remove the tank.



- 02** | Hold the tank with one hand and pull out the top cover of the tank with the other hand.



- 03** | Dump the sewage from the side of the dirty water tank and rinse it clean; remove the filter from the top cover of the dirty water tank, rinse it clean, and air-dry it.



- 04** | Install the dirty water tank back to the machine until there is a click sound; (when installing dirty water tank, it is recommended to hold the body with another hand to avoid tipping over).



CLEANING AND MAINTENANCE

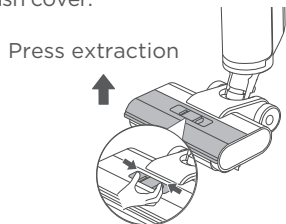
Roll brush and Cover Cleaning



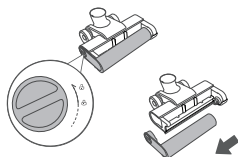
ATTENTION

- It is recommended to clean filter/roll brush after every use and replace after 3-6 months.
- If residual stains are found on the suction surface of the floor brush, wipe it with a wet cloth. Do not rinse it with water.

- 01** | Press the buckle as shown in the diagram to remove the floor brush cover.

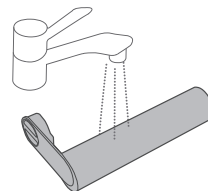


- 02** | Rotate the end cap knob as shown in the diagram and pull out the roll brush sideways.

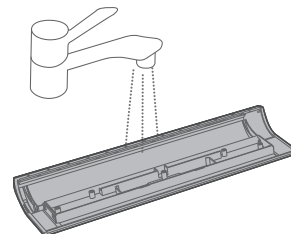


- a. Rotate the end cap knob b. Pull the roller cap knob

- 03** | If there is still hair or other debris tangled on the roll brush after self-cleaning, remove the tangled debris from the roll brush; for heavy-duty cleaning (such as tomato sauce, soy sauce, etc.), if there is still dirt residue on the roll brush after self-cleaning, it can be self-cleaned again or the roll brush can be removed and cleaned with water.

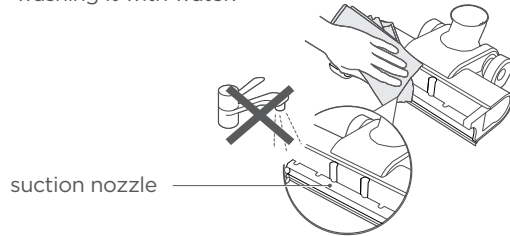


- 04** | If there is residual dirt on the roll brush cover after self-cleaning, rinse the roll brush cover with water.

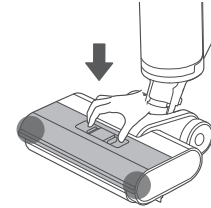


CLEANING AND MAINTENANCE

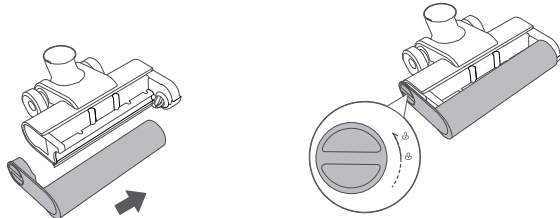
- 05** | If there are any residual stains on the suction nozzle (the part exposed after removing the roll brush) after self-cleaning, please wipe it with a damp cloth instead of washing it with water.



- 07** | After cleaning, cover the floor brush, align it with the installation hole, press it down, and you will hear a click when it is successfully installed.



- 06** | After cleaning, reinstall the roll brush. If not in immediate use, you can place the roll brush in a ventilated area to dry before installation.



a. Reinstall the roller

b. Screw the end cover button

PROBLEM SOLVING



Make sure vacuum is turned off and power cord is unplugged.

NOTICE: Thermal cut-off

This vacuum cleaner has a special thermostat that protects the vacuum in case of motor overheating. If the vacuum suddenly shuts off, proceed as follows: 1) Push the power switch to off and unplug the vacuum. 2) Check the vacuum for a possible source of overheating such as a full dirty water tank, blocked intake passage or clogged filter. If these conditions are found, fix them and wait at least 30 minutes before attempting to use the vacuum. 3) After the 30 minute period, plug the vacuum back in and turn on the switch.

Problem	Possible cause	Solution
Abnormal noise when machine is on	The nozzle is blocked	Clean up obstacles in the nozzle
	The clean water tank is empty	Add water to the clean water tank
	The clean water tank is not installed in place	Reinstall the clean water tank
Floor brush doesn't have water	The clean water tank is empty	Add water to the clean water tank
	The clean water tank is not installed in place	Reinstall the clean water tank
The roll brush isn't spinning	The roll brush is entangled with hair and other objects	Clean the roll brush
	The dirty water tank is full	Clean up the dirty water tank
	Low battery	Recharge the machine
	The pipe is blocked	Clean up the pipe under the waste water tank

PROBLEM SOLVING



Make sure vacuum is turned off and power cord is unplugged.

Problem	Possible cause	Solution
Suction power is weakened	Roll brush, roll brush cover and waste water tank are not installed properly	Reinstall
	The roll brush is entangled with hair and other objects	Clean the roll brush
	The nozzle or pipe is blocked	Clean up obstacles in the nozzle
	Dirty water tank filter is dirty or missing	Clean or install in the nozzle
Water leaking from air outlet	The dirty water tank float is stuck	Empty tank and clean debris from the float, see P13
Water leaking from bottom of machine	Dirty water tank or filter isn't installed	Reinstall dirty water tank and filter, see P13

SPECIFICATIONS

Product Model	NEW430BL
Charging rated input	100-240V- 50/60Hz
Charging output	27V --- 0.8A
Charging time	3-4h
Power	230W

Voltage	22.2V ---
Product Size	270x282x1120mm
Clean water tank volume	800mL
Dirty water tank MAX line volume	400mL

Product Battery Specifications

Feature	Value
Product Code	-
EAN Code	6956079725242
Battery Category	Portable battery
Battery Type	Portable lithium-ion rechargeable batteries (Li - Ion)
Contains Cadmium/Lead (>0.002% Cd, >0.004% Pb)	-
Battery weight net (kg)	0.3
Rated capacity (mAh)	2600
Power (kWh)	0.05772

eureka
EASY . CLEAN . DONE .